

Making a Bee Hotel



twinkl

Making a Bee Hotel

Would you like to own a hotel? Well you can, but first you will have to build it.

You will host special guests that are very important for pollinating plants.

Let's learn how to make your very own bee hotel!



Making a Bee Hotel

You will need:

- Bamboo stems with hollows
- Fennel stems
- Twigs and tree branches
- Rocks
- Bark
- Leaves
- Bricks
- Empty plastic bottles (with the tops cut off), tin cans or pots
- Scissors or secateurs
- Planks of wood for shelving (optional)
- Fruit crate (optional)
- Logs with drilled holes (optional)



Handy Hint – Use untreated wood to make sure you get lots of visitors.

Making a Bee Hotel

Before you make your hotel, you need to find the perfect place for it.

- It should be 1 metre to 1.5 metres off the ground in a warm, sunny place.
- Your bees will need water and food nearby. Make sure you have some plants with flowers that bees really like.
- Try to find somewhere with some protection from the wind and rain. For example, fix it to a sun-facing fence.



Making a Bee Hotel

Once you have found the perfect spot, it is time to build the main structure of the hotel.

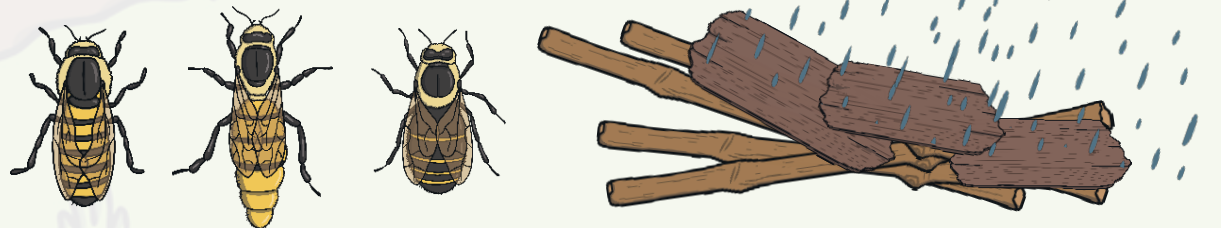
- If you have a crate, then tip it on its' side and stack your bricks inside. Don't forget to leave some gaps for the bottles and pots you will be adding in later.
- If you don't have a crate, use the bricks to create the main structure. You can add in shelves using planks of wood.



Making a Bee Hotel

After you have made the main structure, you can add in the tunnels and holes, so that the bees have somewhere to stay.

- Get your bamboo and fennel stems.
- Ask an adult to help you trim the stems so that they fit tightly inside the cans, bottles or pots.
- Bees like a place to land and holes which are easy to get into. Use the rest of the resources to build areas where the bees would like to stay.
- Put leaves, bark and twigs on the roof of your hotel to help protect it from rain and wind.

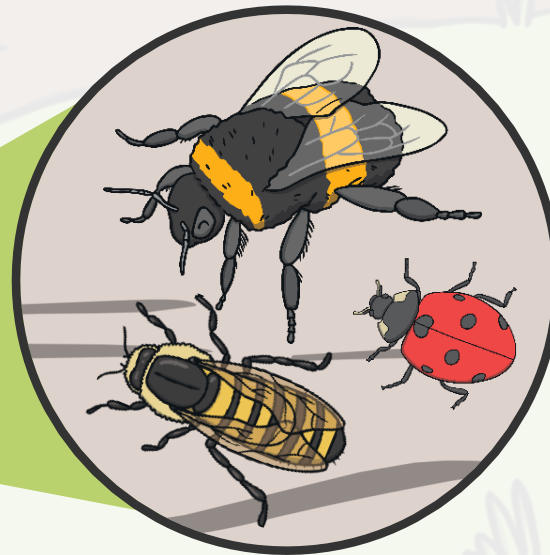


Handy Hint – Bees can be 2mm-10mm, so try to have different sized holes or tunnels.

Making a Bee Hotel

Now that you have your hotel, you can watch and see who visits!

- Be careful and watch from a distance, as bees can sting and so can other creatures you may find in your hotel.
- Record your observations using the **Hotel Fit for Some Bees Recording Sheet**.



Guests You Might See

There are more than 1,500 kinds of native bees in Australia. Your bee hotel might attract the...

Carpenter Bee

The carpenter bee builds nests in dead stems. These bees would like the bamboo or fennel stems.

Leafcutter Bee

The leafcutter bee likes to bore or dig holes. These bees would like the drilled holes in logs.

Reed Bees

Reed bees are small black bees that are about 8mm long. They like to nest inside dry, thick twigs in plants like raspberries, blackberries or in dead fronds of tree ferns.

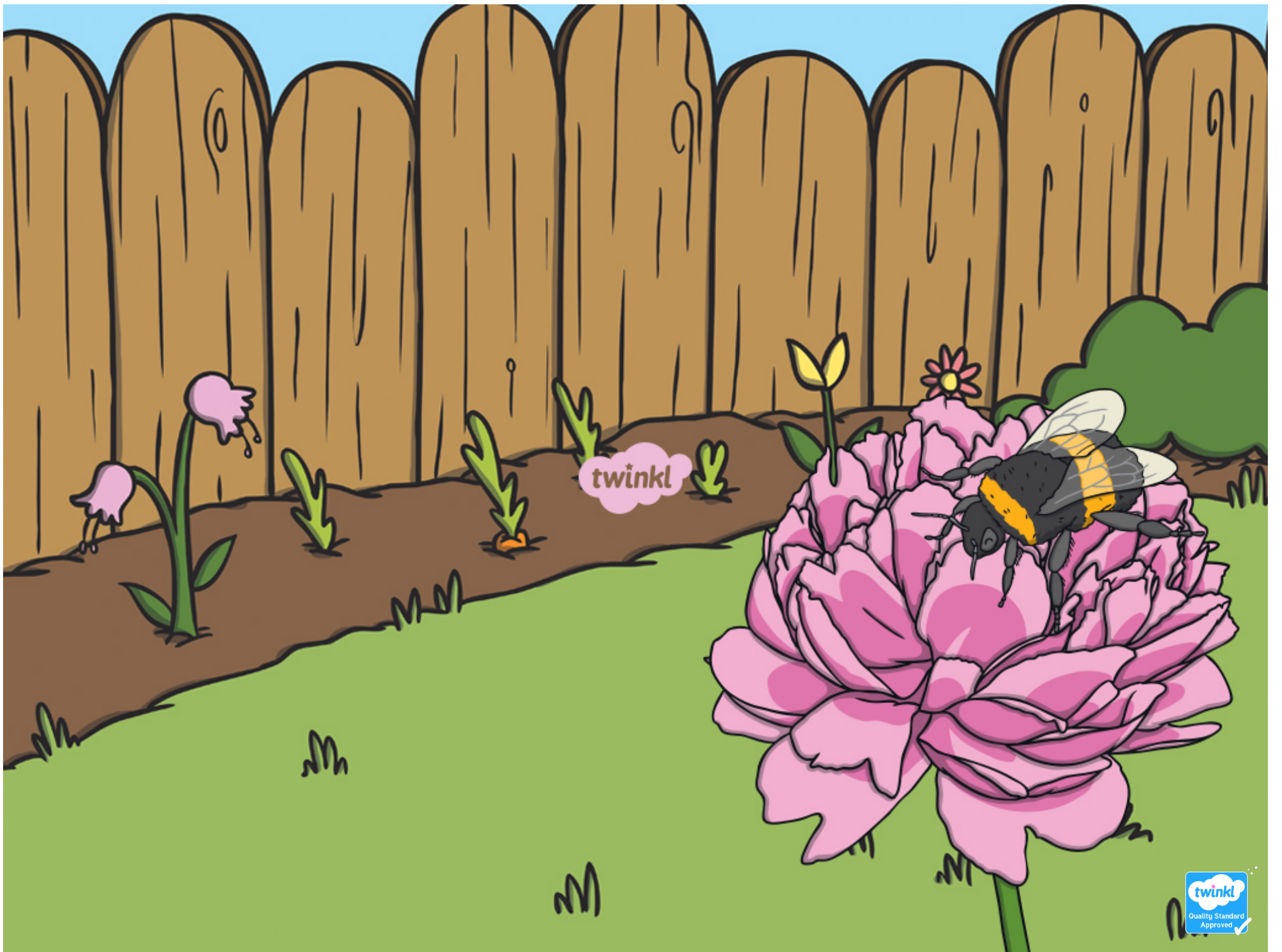
Masked Bees

These bees got their name because they have markings on their faces. They like to nest in thick stems or holes in wood.

Did You Know...?

- In 1851, Lorenzo Langstroth invented the beehive that we still use today. He helped make hives with moveable frames. These frames let the beekeeper take out honeycomb and honey without destroying the hive.
- Cedar and Stuart Anderson invented the Flow Beehive. This is a special beehive that makes collecting honey much easier – beekeepers don't even have to open the beehive!





twinkl