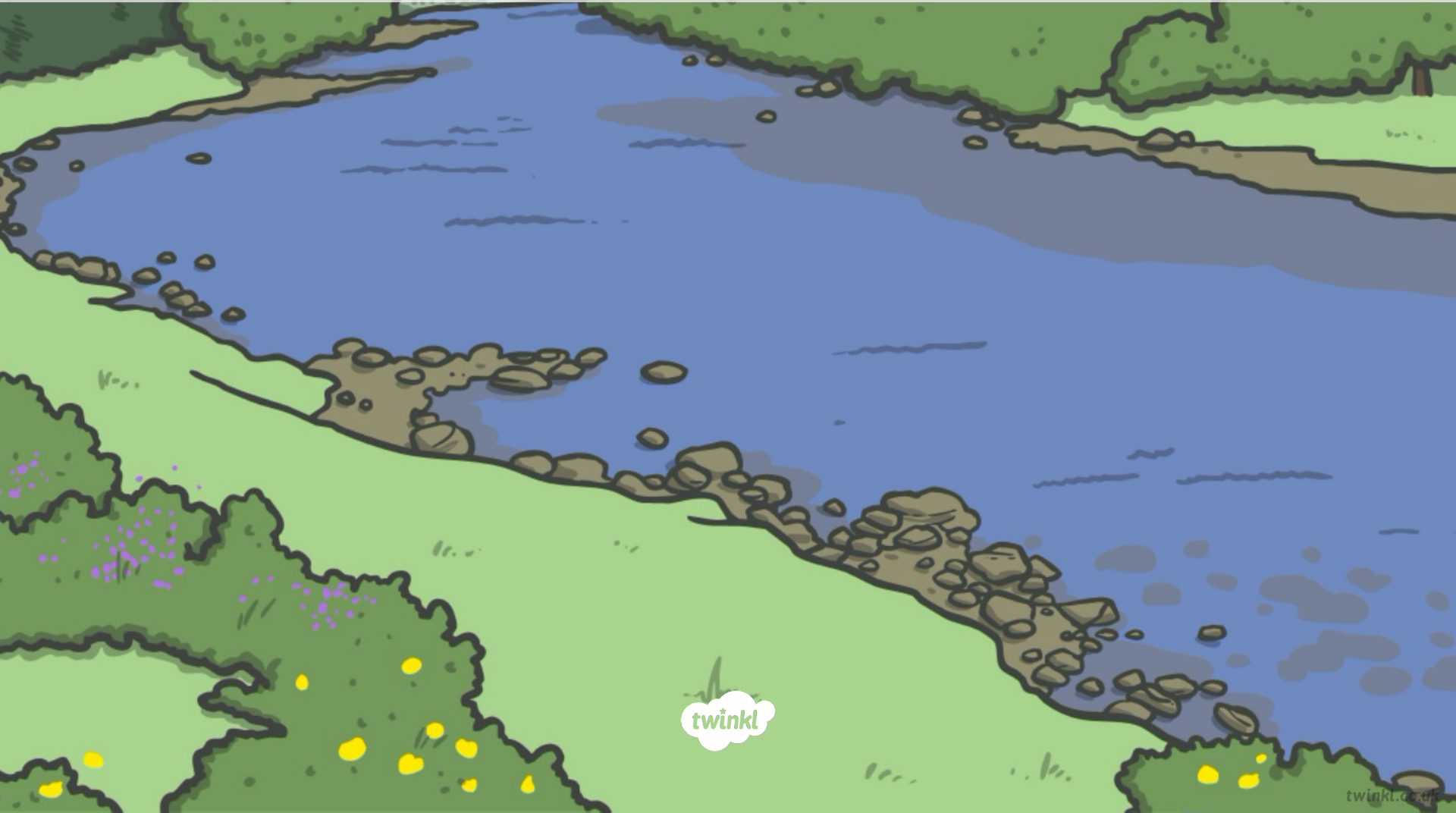




Spelling, Punctuation and Grammar

Correctly Demarcating Sentences

Correctly Demarcating Sentences



Correctly Demarcating Sentences

Introductory Activity

Independent Focused Activity

Review Activity

Consolidation Activity

Assessment

Aim

- I can use capital letters and punctuation to show where sentences begin and end.

Success Criteria

- I can identify where sentences should begin and end.
- I can identify different types of sentence.
- I can use correct beginnings and endings for different types of sentence.
- I can punctuate and demarcate different types of sentence correctly in my own writing.



Introductory Activity

Sentences



Sentences are the blocks which the English Language is built from.

A sentence is a group of words which is a complete thought. It must make sense on its own. It must contain a verb.

Which of these groups of words really are sentences? Think about whether anything happens. Can you put them together correctly?

Sentence

Non-sentence

The tower of London.

It took a long while.

We caught the train.

At the bottom of the stairs.

When she got home.

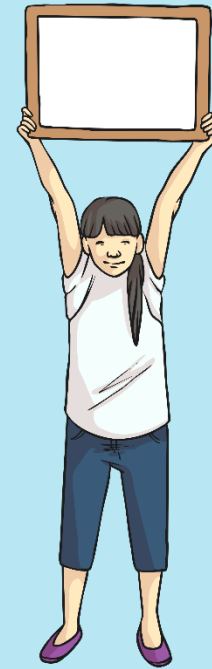
Sentences



At the start of every sentence is a capital letter. This is easy to remember because it is **ALWAYS** true.

What are the letters that should really be at the beginning of these sentences? Write them as large as you can fit them on your whiteboard.

1. every single snowflake is different.
2. your house is bigger than mine.
3. have you seen that new film about wizards?
4. get off that table before it breaks!

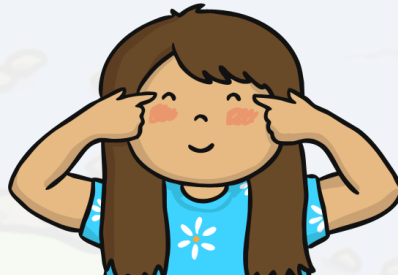


Sentences



How can you hear when a reader reaches the end of a sentence?

There should be a pause as the reader takes a breath ready to read the next sentence.



Close your eyes and use your fingers to count how many sentences you hear when the teacher reads the passage on the next slide.

Sentences



Cats sleep a lot. They can sleep anywhere. They sleep on newspapers, on windowsills and even in baskets. When they wake up they have a good stretch. Sometimes they go straight back to sleep again.

Answer = There are 5 sentences in that passage.

Sentences



Practice Zone

Do you need more practice on deciding when a sentence should end?

You could listen to these sentences to practice, or complete the 'Sentence Ends Activity Sheet'.

Our dog is funny. He tries to sit at the table when we have tea. When we talk to each other he barks to join in. He is part of our family.

My hobby is collecting trains. I have almost 300. I have been collecting them since I was 5. It all started when my dad went away on a trip and bought me a train as a present. Now everyone buys me trains.

Sentence Ends

Using capital letters and punctuation to show where sentences begin and end.

Mark the passage with forward slashes where you think the sentences should end. When you have decided on your sentence slashes change the first word in each of your sentences to be a big capital letter.

e.g. The wind was very strong / They felt as though they might get blown over.

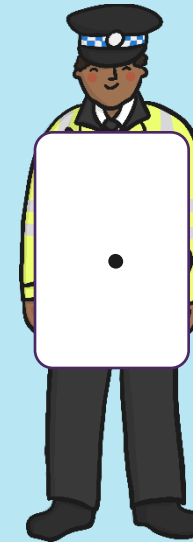
1. our dog is funny he tries to sit at the table when we have tea when we talk to each other he barks to join in he is part of our family
2. my hobby is collecting trains I have almost 300 I have been collecting them since I was 5 it all started when my dad went away on a trip and bought me a train as a present now everyone buys me trains
3. Now use your sentence ending skills to rewrite this paragraph using full stops and capital letters where they are needed.

I love going to the beach there is so much to do last year the water was too cold for swimming this year I have been in the sea every day my favourite thing to do on the beach is sit and eat ice cream

Sentences: Punctuation



Every sentence also ends with one of three punctuation marks: an exclamation mark, a full stop or a question mark.



If it doesn't have one we have an emergency.

Sentences: Punctuation



Full stops

Used for general sentences which state something.

e.g. Apples can be green or red.



Exclamation Marks

Used for exclamations, possibly sudden, or strong emotions such as shock, disgust, anger or happiness.

e.g. What a mess!



Question Marks

Used when a sentence is asking something and has an answer.

e.g. Can I have some pudding?



Sentences: Punctuation



Feed these sentences through this **flow chart** to see what sort of punctuation they need at the end. Refer back to it whenever you need to during the lesson.

What time is it
Broccoli is disgusting
We will meet you there
Why are you lying down
I can't believe we won
Archery is my hobby

Sentences: Punctuation



What time is it

Does this sentence ask something?
Does it have an answer?

No

Does this sentence express strong
emotion such as surprise, shock
or anger?

Yes

Question
Mark
?

What time is it?

Full Stop
.

No

Yes

Exclamation
Mark
!

Sentences: Punctuation



Broccoli is disgusting

Does this sentence ask something?
Does it have an answer?

Yes

Question
Mark
?

No

Broccoli is disgusting

Does this sentence express strong
emotion such as surprise, shock
or anger?

No

Yes

Full Stop
.

Exclamation
Mark
!

Broccoli is disgusting!

Sentences: Punctuation



We will meet you there

Does this sentence ask something?
Does it have an answer?

Yes

Question
Mark
?

No

We will meet you there

Does this sentence express strong
emotion such as surprise, shock
or anger?

No

Yes

Full Stop
.

Exclamation
Mark
!

We will meet you there.

Sentences: Punctuation



Why are you lying down

Does this sentence ask something?
Does it have an answer?

No

Does this sentence express strong
emotion such as surprise, shock
or anger?

Yes

Question
Mark
?

No

Yes

Full Stop
.

Exclamation
Mark
!

Why are you lying down?

Sentences: Punctuation



I can't believe we won

Does this sentence ask something?
Does it have an answer?

Yes

Question
Mark
?

No

I can't believe we won

Does this sentence express strong
emotion such as surprise, shock
or anger?

No

Yes

Full Stop
.

Exclamation
Mark
!

I can't believe we won!

Sentences: Punctuation



Archery is my hobby

Does this sentence ask something?
Does it have an answer?

Yes

Question
Mark
?

No

Does this sentence express strong
emotion such as surprise, shock
or anger?

No

Yes

Full Stop
.

Exclamation
Mark
!

Archery is my hobby.



Independent Focused Activity

Save our Sentences



★ Save our Sentences

Using capital letters and punctuation to show where sentences begin and end.

These sentences are in need of emergency assistance. First correct the capital letter at the beginning of the sentence. Next choose the right punctuation mark to finish the sentence. The first one has been done for you.

1. Questions:

- a) **C** Can you play out side ?
- b) Shall we get a cat _____
- c) Would you like to go _____
- d) How much is the watch _____
- e) Why did you hate it from me _____
- f) Where shall we sit _____

2. Exclamations:

- a) **T** Just really nice !
- b) I am the winner _____
- c) Don't ever do that again _____
- d) Watch your back _____
- e) How I come _____
- f) What a nightmare _____

3. Statements:

- a) **W** Near the end one _____
- b) Let's have a drink _____
- c) We'll be there in half an hour _____
- d) When it started raining I got cold _____
- e) It's the house at the end of the street _____
- f) You never know until you try _____

★ Save our Sentences

Using capital letters and punctuation to show where sentences begin and end.

1. These sentences are in need of emergency assistance. Fix the capital letter in each sentence and draw a line to connect it to the correct punctuation mark.

what did the teacher say	
lady birds are red	
look out, its coming fast	
who hid the pencil	
I can't believe it	
it is getting very late	

which way is it to the shop

2. Read the passage below and fix the capital letters. Add the correct punctuation to finish the sentences.

We stand at the mountain in front of us it was huge would we ever be able to climb it would it be as hard as it looked we set off suddenly a rock came crashing down it just missed! There would would have happened if it had hit us instead of it was too hot finally we straggles ourselves over the top the view was amazing

★ Save our Sentences

Using capital letters and punctuation to show where sentences begin and end.

1. These sentences are in need of emergency assistance.

- a) Can they for a long time _____
- b) There was a huge being _____
- c) Much sugar would you like _____
- d) It absolutely freezing _____
- e) Are lighter than you think _____
- f) Work very hard _____
- g) Is the grass greener _____
- h) One popular per _____

2. Emergency! The beginnings of these sentences are lost. Write a new beginning for them.

eg: Our car has been _____	stolen!
1. _____	castles?
2. _____	sendin' home.
3. _____	party!
4. _____	amazing!
5. _____	rock.
6. _____	ridiculous!

★ Fix the sentences by adding emergency capital letters and punctuation.

★ Fix the sentence and the paragraph in urgent need of capital letters and full stops.

★ Write correctly punctuated beginnings and endings to save these sentences.

It's an emergency situation for the sentences and passages on these worksheets! Can you save them by correctly demarcating them with appropriate punctuation and capital letters?



Review Activity


Punctuation Pits




Punctuation Pits


I can use capital letters and punctuation to show where sentences begin and end.

START





FINISH

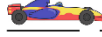



1. The pit lane is where important changes are made during a motor race. Bring these sentences into the pits to fix them. Add a capital letter and either a full stop, exclamation mark or a question mark. How many points can you score? An example has been done for you

what colour are your shoes	What colour are you shoes?
1 point for each correct capital letter	Total = 1
1 point for each correct punctuation mark	Total = 1

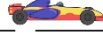
twinkl planit IPW | Correctly Demarcating Sentences

START





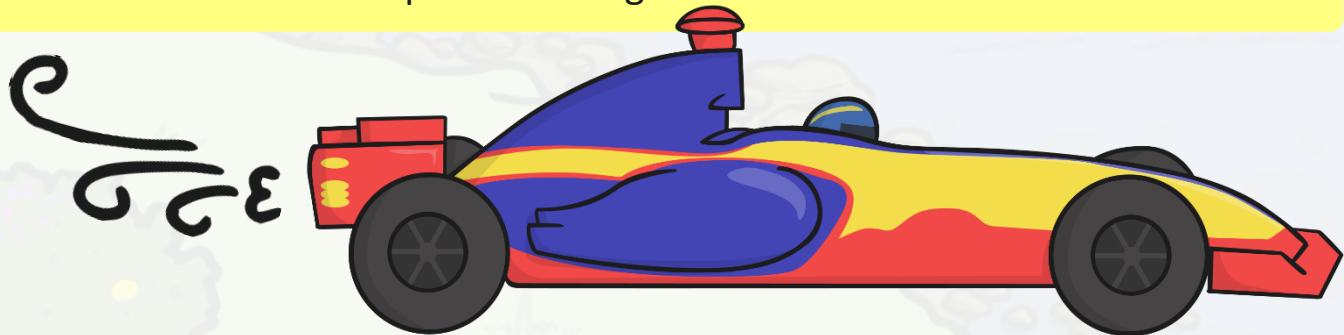
FINISH



will we get there on time	
help, I can't swim	
my jumper is red	
quick, get out of the way	
what colour is it	
it is nice in the woods	
we will get there before if starts	
can you type quickly	
1 point for each correct capital letter	Total =
1 point for each correct punctuation mark	Total =

twinkl planit IPW | Correctly Demarcating Sentences

Show what you've learned about demarcating sentences correctly by bringing the racing car sentences on this sheet into the pits and fixing them!





Consolidation Activity





Correct Sentences



Correct Sentences

Using capital letters and punctuation to show where sentences begin and end.

Write two correctly punctuated examples of each sentence type which match the picture.

Picture	Statements	Exclamations	Questions
			
			
			
			



planit

SPaG1 Correctly Demarcating Sentences

Write different types of sentence to match each picture – make sure your punctuation is correct!

