



Apostrophes for Possession

Warm-Up

twinkl

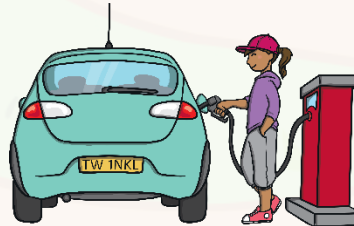
Can you write a sentence to describe each picture using an apostrophe to show possession? Click on the picture to see the answer.

Nadia



This is **Nadia's** radio.

Rachel



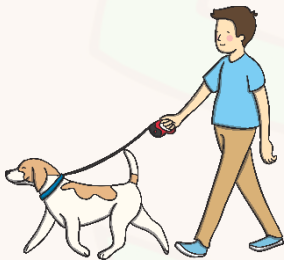
This is **Rachel's** car.

Clara



This is **Clara's** train.

Owen



This is **Owen's** dog.

Kaylee



This is **Kaylee's** book.

Malik



This is **Malik's** rocket.

These children are talking about birthdays but there are no apostrophes in their sentences! Can you add them in? Click the bubbles to see the answer.

My brother's birthday is next week.

It is my sister's birthday next month.

Make space for the birthday boy's cake!

It is Peter's birthday today.

My dad's birthday is in June.



Can you write what you would say in this conversation, using an apostrophe to show possession?

Can you rewrite each sentence so that it includes an apostrophe to show possession? The first one has been done for you. Click the sentence to see if you were right.

Charlie is looking at the hoop that belongs to Isla.



Charlie is looking at Isla's hoop.

I ate a big slice of the cake that belongs to Tim.

I ate a big slice of Tim's cake.

These are the parents that belong to Aleena.

These are Aleena's parents.

Chloe got paint in the hair that belongs to Luna.

Chloe got paint in Luna's hair.

After playing all day, I had to lie down on the sofa that belongs to Derek.

After playing all day, I had to lie down on Derek's sofa.

I washed the car that belongs to my uncle.

I washed my uncle's car.

Serena broke the necklace that belonged to her mum.

Serena broke her mum's necklace.

This family are very possessive of their food! Can you write labels for all the food in their fridge using apostrophes to show possession? One has been done for you.



Misty



Grandpa
John



Colin



Kaya



Alfie

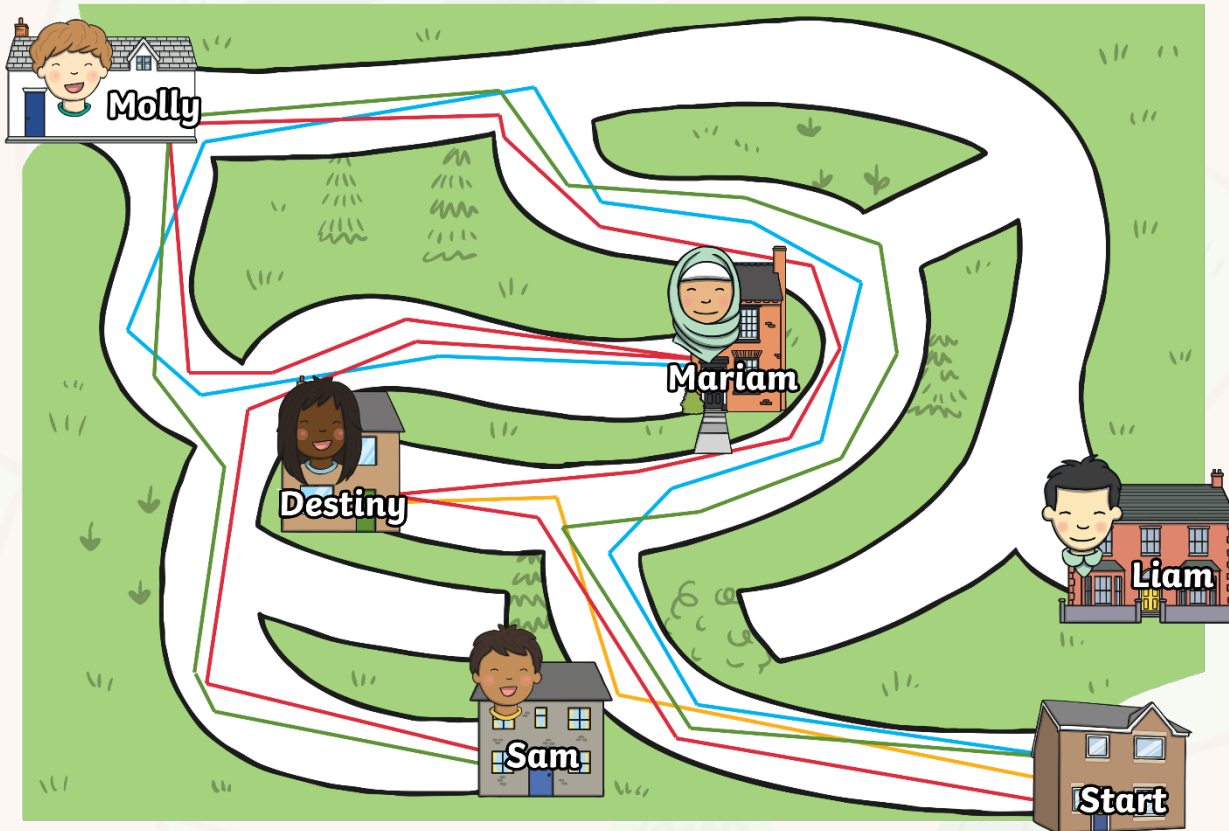


Karen

Show answers

Can you write some labels for food in your fridge using apostrophes to show who they belong to in your family?

Look at the three different-coloured bus routes. Can you answer the questions about the different children's houses? Make sure you use apostrophes to show possession in your answers.



1. Whose house does the yellow route visit?
Destiny's house
 2. Which two houses does the blue route visit?
Mariah's house and Molly's house
 3. Whose house does the red route **not** visit?
Liam's house
 4. Where does the green route finish?
Sam's house
- Can you make up your own route? Write down the houses you would visit in the order you would visit them. Don't forget to use apostrophes to show possession.**

Show answers

Split into two teams. Take it in turns to choose which sentence uses an apostrophe for possession correctly. If a team choose correctly, they get a point. If they choose incorrectly, the other team gets a point.

Which is correct?

Sallys favourite day of the week is Friday.

Sally's favourite day of the week is Friday.

Incorrect
1 point to
the other
team!

Split into two teams. Take it in turns to choose which sentence uses an apostrophe for possession correctly. If a team choose correctly, they get a point. If they choose incorrectly, the other team gets a point.

Which is correct?

Do not sit on the
teacher's chair.

Do not sit on the
teachers' chair.

Incorrect
1 point to
the other
team!

Split into two teams. Take it in turns to choose which sentence uses an apostrophe for possession correctly. If a team choose correctly, they get a point. If they choose incorrectly, the other team gets a point.

Which is correct?

I often borrow my
brother's clothes.

I often borrow my
brothe'r's clothes.

Incorrect
1 point to
the other
team!

Split into two teams. Take it in turns to choose which sentence uses an apostrophe for possession correctly. If a team choose correctly, they get a point. If they choose incorrectly, the other team gets a point.

Which is correct?

I watered my neighbours plants while she was away.

I watered my neighbour's plants while she was away.

Incorrect
1 point to
the other
team!

Split into two teams. Take it in turns to choose which sentence uses an apostrophe for possession correctly. If a team choose correctly, they get a point. If they choose incorrectly, the other team gets a point.

Which is correct?

I played with Samantha's
hamster.

I played with Samanth'as
hamster.

Incorrect
1 point to
the other
team!

Split into two teams. Take it in turns to choose which sentence uses an apostrophe for possession correctly. If a team choose correctly, they get a point. If they choose incorrectly, the other team gets a point.

Which is correct?

Harry went to stay at his
grandma's house in the
holidays.

Harry went to stay at his
grandmas' house in the
holidays.

Incorrect
1 point to
the other
team!

Split into two teams. Take it in turns to choose which sentence uses an apostrophe for possession correctly. If a team choose correctly, they get a point. If they choose incorrectly, the other team gets a point.

Which is correct?

I love to stroke my cat
Sasha's fur.

I love to stroke my cat
Sa'sha fur.

Incorrect
1 point to
the other
team!



twinkl