



Managing Medicines in Schools Policy

Aims

This policy aims to ensure that:

Children, staff and parents/carers understand how our school will support children with medical conditions

Children with medical conditions are properly supported to allow them to access the same education as other children, including school trips and sporting activities

The governing board will implement this policy by:

Making sure sufficient staff are suitably trained

Making staff aware of children's conditions, where appropriate

Making sure there are cover arrangements to ensure someone is always available to support children with medical conditions

Providing supply teachers with appropriate information about the policy and relevant children

Developing and monitoring individual healthcare plans (IHPs)

The named person with responsibility for implementing this policy is Mrs Horsburgh.

Legislation and statutory responsibilities

This policy meets the requirements under Section 100 of the Children and Families Act 2014, which places a duty on governing boards to make arrangements for supporting children at their school with medical conditions.

It is also based on the Department for Education (DfE)'s statutory guidance on supporting Children with medical conditions at school.

Roles and responsibilities

3.1 The governing board

The governing board has ultimate responsibility to make arrangements to support children with medical conditions. The governing board will ensure that sufficient staff have received suitable training and are competent before they are responsible for supporting children with medical conditions.

3.2 The office staff/healthcare professional

Make sure all staff are aware of this policy and understand their role in its implementation

Ensure that there is a sufficient number of trained staff available to implement this policy and deliver against all individual healthcare plans (IHPs), including in contingency and emergency situations

Ensure that all staff who need to know are aware of a child's condition

Take overall responsibility for the development of IHPs

Make sure that school staff are appropriately insured and aware that they are insured to support children in this way

Contact the school nursing service in the case of any pupil who has a medical condition that may require support at school, but who has not yet been brought to the attention of the school nurse

Ensure that systems are in place for obtaining information about a child's medical needs and that this information is kept up to date

3.3 Staff

Supporting children with medical conditions during school hours is not the sole responsibility of 1 person. Any member of staff may be asked to provide support to children with medical conditions, although they will not be required to do so. This includes the administration of medicines.

Those staff who take on the responsibility to support children with medical conditions will receive sufficient and suitable training, and will achieve the necessary level of competency before doing so.

Teachers will take into account the needs of children with medical conditions that they teach. All staff will know what to do and respond accordingly when they become aware that a child with a medical condition needs help.

3.4 Parents/carers

Provide the school with sufficient and up-to-date information about their child's medical needs

Be involved in the development and review of their child's IHP and may be involved in its drafting

Carry out any action they have agreed to as part of the implementation of the IHP, e.g. provide medicines and equipment, and ensure they or another nominated adult are contactable at all times

3.5 Children

Children with medical conditions will often be best placed to provide information about how their condition affects them. Children should be fully involved in discussions (as appropriate for a young child) about their medical support needs and contribute as much as possible to the development of their IHPs.

3.6 School nurses and other healthcare professionals

The Local Authority nursing service will notify the school when a pupil has been identified as having a medical condition that will require support in school. This will be before the child starts school, wherever possible. They may also support staff to implement a child's IHP.

Healthcare professionals, such as GPs and paediatricians, will liaise with the school's nurses and notify them of any Children identified as having a medical condition. They may also provide advice on developing IHPs.

Equal opportunities

Our school is clear about the need to actively support children with medical conditions to participate in school trips and visits, or in sporting activities, and not prevent them from doing so.

The school will consider what reasonable adjustments need to be made to enable these children to participate fully and safely on school trips, visits and sporting activities.

Risk assessments will be carried out so that planning arrangements take account of any steps needed to ensure that children with medical conditions are included. In doing so, children, their parents/carers and any relevant healthcare professionals will be consulted.

Further advice is available from the LA Advisory Service, for example, Offsite & Hazardous Activities Manual: A parental consent and medical form, OHA2.

Contact: Paul Bowden Outdoor Education & Visits Adviser

Address: Town Hall, St Ives Road, Maidenhead, Berkshire

Email: Paul.bowen@achievingforchildren.org.uk

Mobile: 07968 832367

Being notified that a child has a medical condition

When the school is notified that a child has a medical condition, the process outlined below will be followed to decide whether the child requires an IHP.

The school will make every effort to ensure that arrangements are put into place within 2 weeks, or by the beginning of the relevant term for children who are new to our school.

Individual healthcare plans (IHPs)

The governors have overall responsibility for the development of IHPs for children with medical conditions. This has been delegated to the office staff.

Plans will be reviewed at least annually, or earlier if there is evidence that the child's needs have changed.

Plans will be developed with the child's best interests in mind and will set out:

What needs to be done

When

By whom

A list of children that need an IHP is reviewed at the beginning of each new year in September with any new children added. Not all children with a medical condition will require an IHP. It will be agreed with a healthcare professional and the parents/carers when an IHP would be inappropriate or disproportionate. This will be based on evidence. If there is no consensus, the headteacher will make the final decision.

Plans will be drawn up in partnership with the school, parents/carers and a relevant healthcare professional, such as the school nurse, specialist or paediatrician, who can best advise on the child's specific needs. The child will be involved wherever appropriate.

IHPs will be linked to, or become part of, any education, health and care (EHC) plan. If a child has special educational needs (SEN) but does not have an EHC plan, the SEN will be mentioned in the IHP.

The level of detail in the plan will depend on the complexity of the child's condition and how much support is needed. The governing board and the headteacher/office staff will consider the following when deciding what information to record on IHPs:

The medical condition, its triggers, signs, symptoms and treatments

The child's resulting needs, including medication (dose, side effects and storage) and other treatments, time, facilities, equipment, testing, access to food and drink where this is used to manage their condition, dietary requirements and environmental issues, e.g. crowded corridors, travel time between lessons

Specific support for the child's educational, social and emotional needs. For example, how absences will be managed, use of rest periods or additional support in catching up with lessons

The level of support needed, including in emergencies. If a child is self-managing their medication, this will be clearly stated with appropriate arrangements for monitoring

Who will provide this support, their training needs, expectations of their role and confirmation of proficiency to provide support for the child's medical condition from a healthcare professional, and cover arrangements for when they are unavailable?

Who in the school needs to be aware of the child's condition and the support required?

Arrangements for written permission from parents/carers and the headteacher for medication to be administered by a member of staff, or self-administered by the child during school hours

Separate arrangements or procedures required for school trips or other school activities outside of the normal school timetable that will ensure the pupil can participate, e.g. risk assessments

Where confidentiality issues are raised by the parent/carer or child, the designated individuals to be entrusted with information about the child's condition

What to do in an emergency, including who to contact and contingency arrangements
See Appendix 1: The process for developing IHPs

Managing medicines

Prescription/non-prescription medicines will only be administered at school:

When it would be detrimental to the child's health or school attendance not to do so and

Where we have parents/carers' written consent

The only exception to this is where the medicine has been prescribed to the child without the knowledge of the parents/carers.

Children under 16 will not be given medicine containing aspirin unless prescribed by a doctor.

Anyone giving a child any medication (for example, for pain relief) will first check maximum dosages and when the previous dosage was taken. Parents/carers will always be informed.

The school will only accept prescribed medicines that are:

In-date

Labelled

Provided in the original container, as dispensed by the pharmacist, and include instructions for administration, dosage and storage

The school will accept insulin that is inside an insulin pen or pump rather than its original container, but it must be in date.

If an emergency inhaler is needed, school will write their own protocol and get the parents' consent to use it in an emergency. A member of staff will be trained and this will be included in an IHP.

All medicines will be stored safely. Children will be informed about where their medicines are at all times and be able to access them immediately. Medicines and devices such as asthma inhalers, blood glucose testing meters and adrenaline pens will always be readily available to children.

Medicines will be returned to parents/carers to arrange for safe disposal when no longer required.

7.1 Controlled drugs

Controlled drugs are prescription medicines that are controlled under the Misuse of Drugs Regulations 2001 and subsequent amendments.

A child who has been prescribed a controlled drug may have it in their possession if they are competent to do so, but they must not pass it to another child to use. All other controlled drugs are kept in a secure cupboard in the school office and only named staff have access.

Controlled drugs will be easily accessible in an emergency and a record of any doses used and the amount held will be kept.

7.2 Children managing their own needs

Children who are competent will be encouraged to take responsibility for managing their own medicines and procedures. This will be discussed with parents/carers and it will be reflected in their IHPs.

Staff will not force a child to take a medicine or carry out a necessary procedure if they refuse, but will follow the procedure agreed in the IHP and inform parents/carers so that an alternative option can be considered, if necessary.

A medication error must be reported to the Headteacher and an Incident Report Form completed and copied to RBWM H&S Team.

Emergency procedures

Staff will follow the school's normal emergency procedures (for example, calling 999). All children's IHPs will clearly set out what constitutes an emergency and will explain what to do.

If a child needs to be taken to hospital, staff will stay with the child until the parent/carer arrives, or accompany the child to hospital by ambulance.

Training

Staff who are responsible for supporting children with medical needs will receive suitable and sufficient training to do so.

The training will be identified during the development or review of IHPs. Staff who provide support to children with medical conditions will be included in meetings where this is discussed.

The relevant healthcare professionals will lead on identifying the type and level of training required and will agree this with the school business manager and the office staff. Training will be kept up to date.

Training will:

Be sufficient to ensure that staff are competent and have confidence in their ability to support the children

Fulfil the requirements in the IHPs

Help staff to have an understanding of the specific medical conditions they are being asked to deal with, their implications and preventative measures

Healthcare professionals will provide confirmation of the proficiency of staff in a medical procedure, or in providing medication.

All staff will receive training so that they are aware of this policy and understand their role in implementing it, for example, with preventative and emergency measures so they can recognise and act quickly when a problem occurs. This will be provided for new staff during their induction.

Record keeping

The governing board will ensure that written records are kept of all medicine administered to children for as long as these children are at the school. Parents/carers will be informed if their pupil has been unwell at school.

IHPs are kept in a readily accessible place that all staff are aware of.

The forms listed below can be found at the end of this policy.

Form 1: Medical Collecting Form

Form 2: Individual Health Care Plan

Form 3: Parental Agreement to Administer Medicine

Form 4: Record of Medicine Administered

Form 5: Record of Medicine Administered

Liability and indemnity

The governing board will ensure that the appropriate level of insurance is in place and appropriately reflects the school's level of risk.

King's Court First School's liability policy will operate to indemnify a member of staff in respect of administering first aid, medicines or drugs and health care treatments as part of care plans for children, provided the following is met:

- 'First aid' means emergency care given immediately to an injured or sick person, be that child or adult, by an employee in the course of carrying out their duties. An employee administering first aid should have received the appropriate training to do so.
- Any health plan to be followed for a child should be detailed in a care plan drawn up, or otherwise approved by a health care professional, and the council/school should have carried out risk assessments to approve the provision of the treatment.

- The member of staff providing treatment should have undergone documented training and achieved the competency standard specified in the care plan. They should be working under the direction/control of a health care professional (as necessary).

Complaints

Parents/carers with a complaint about the school's actions in regard to their child's medical condition should discuss these directly with the office staff in the first instance. If the office staff cannot resolve the matter, they will direct parents/carers to the headteacher in line with the school's complaints procedure.

Monitoring arrangements

This policy will be reviewed and approved by the governing board every year.

Links to other policies

This policy links to the Policy for Managing Medicines in School (AfC) and the following policies:

Accessibility plan

Complaints

Equality

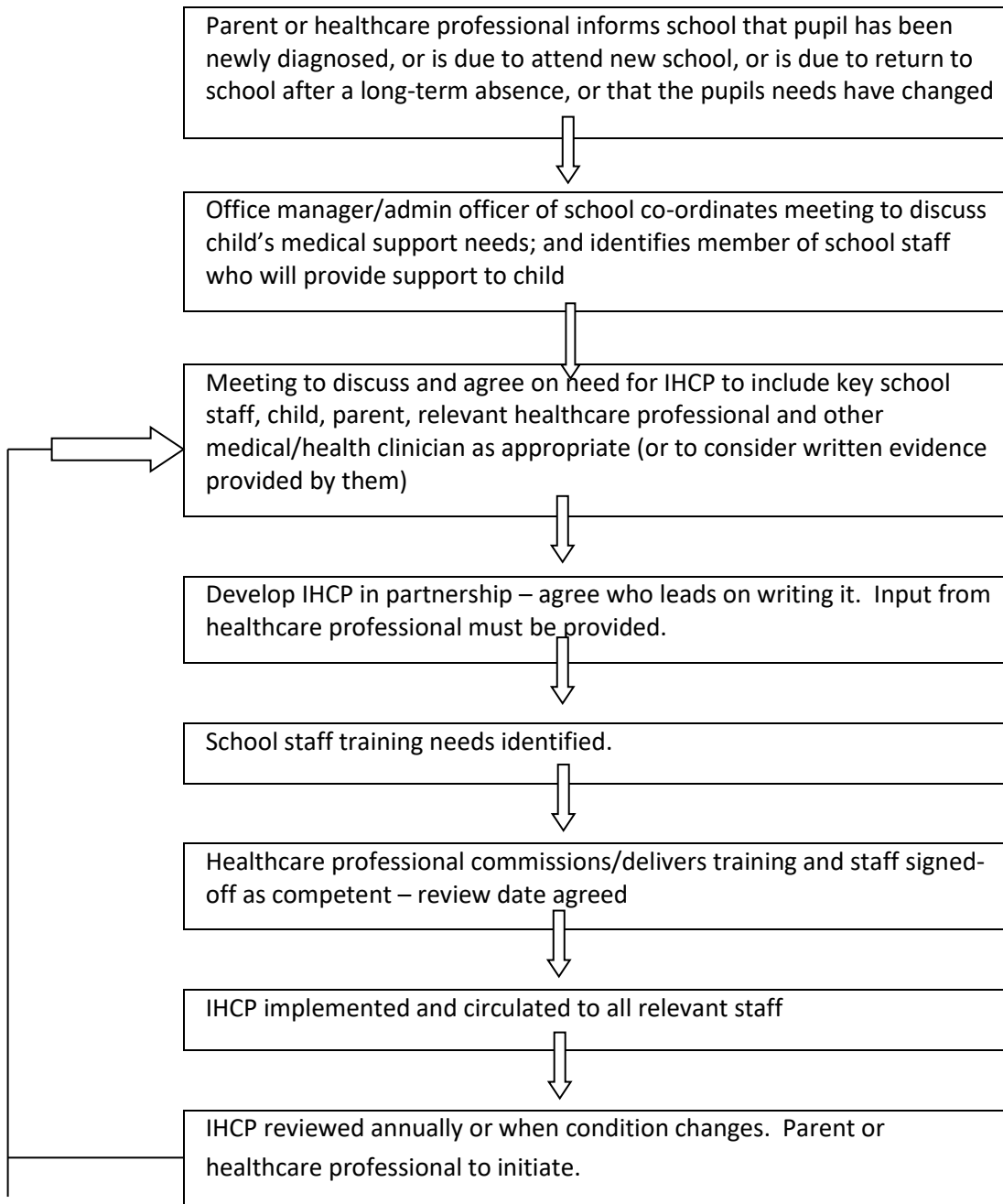
First aid

Health and safety

Safeguarding

Special educational needs

Appendix 1: Process for Developing IHCPs



Form 2: Individual Health Care Plan

Name of school/setting	
Child's name	
Group/class/form	
Class teacher to inform	
Date of birth	
Child's address	
Medical diagnosis or condition	
Date	
Review date	

Family Contact Information

Name	
Phone no. (work)	
(home)	
(mobile)	
Name	
Relationship to child	
Phone no. (work)	
(home)	
(mobile)	

Clinic/Hospital Contact

Name	
Phone no.	

G.P.

Name	
Phone no.	
Who is responsible for providing support in school	

Describe medical needs and give details of child's symptoms, triggers, signs, treatments, facilities, equipment or devices, environmental issues etc

--

Name of medication, dose, method of administration, when to be taken, side effects, contra-indications, administered by/self-administered with/without supervision

Daily care requirements

Specific support for the child's educational, social and emotional needs

Arrangements for school visits/trips etc

Other information

Describe what constitutes an emergency, and the action to take if this occurs

Who is responsible in an emergency (*state if different for off-site activities*)

Plan developed with

Staff training needed/undertaken – who, what, when

Form copied to

Form 3: Parental Agreement to Administer Medicine

The school will not give your child medicine unless you complete and sign this form, and the school has a policy that the staff can administer medicine.

Date for review to be initiated by	
Name of school	King's Court First School
Name of child	
Date of birth	
Group/class/form	
Medical condition or illness	

MEDICINE

Name/type of medicine <i>(as described on the container)</i>	
Expiry date	
Dosage and method	
Timing (medication administered at lunchtime: 12.00-12.15)	
Special precautions/other instructions	
Are there any side effects that the school needs to know about?	
Self-administration – y/n	
Procedures to take in an emergency	

NB: Medicines must be in the original container as dispensed by the pharmacy. Staff member to complete check at bottom of page while parent is still present. Medication cannot be accepted if all these criteria are not met.

Contact Details

Name	
Daytime telephone no.	
Relationship to child	
Address	
I understand that I must deliver the medicine personally to [agreed member of staff]	

The above information is, to the best of my knowledge, accurate at the time of writing and I give consent to school staff administering medicine in accordance with the school policy. I will inform the school immediately, in writing, if there is any change in dosage or frequency of the medication or if the medicine is stopped.

Signature(s): _____ Date: _____

CORRECT NAME	ORIGINAL CONTAINER	LABEL CHECKED	EXPIRY DATE	CHECKED BY

